

LED-CHL-45-1200

PROJECT	TYPE
CATALOG NUMBER	

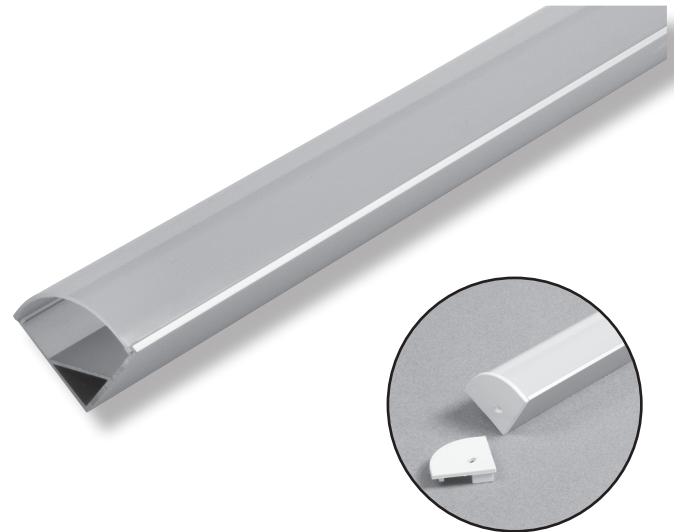
PRODUCT DESCRIPTION

Extruded angled aluminum channel with snap on, semi-frosted glossy lens that provides a rigid, deep set linear mounting platform tilted at a 45° angle for the following GM Lighting LEDTask Flexible LED Linear Ribbons:

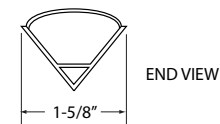
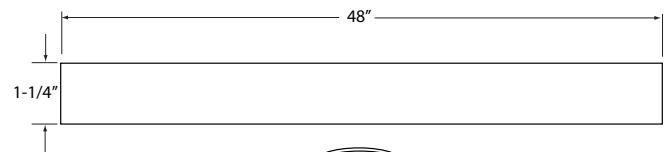
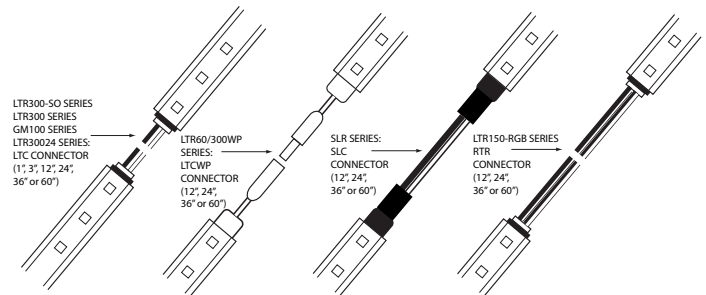
For the following LEDTask™ Flexible Linear Ribbon Series	
LTR60/300 Series	12VDC High Output - Dry and Wet location
LTR60/300-SO Series	12VDC Standard Output - Dry and Wet location
GM100-24 Series	24VDC Standard Output - Dry and Wet location
LTR30024 Series	24VDC High Output - Dry and Wet location
SLR Series	12VDC Standard Output - Damp location
LTR150-RGB Series	12VDC RGB Series - Dry location
LTR30/150RGB Series	12VDC RGB Series - Wet location
LTR120024-HO Series	24VDC Super High Output

MOUNTING

Use LED-CHL-45-1200-MC mounting clips (2) that are supplied with the channel. Flexible LED linear ribbon uses attached 3M mounting tape. Additional clips are available below. Use LED-CHL-45-1200-EC endcaps for a finished look. Ordered separately



PLEASE ALLOW THE FOLLOWING VISUAL CLEARANCE TO ALLOW FOR FLEXIBLE RIBBON TO RIBBON CONNECTORS



NOTE: Channel may not accommodate ribbon to ribbon and ribbon to power supply connections. Please locate connections outside of channel interior.

Accessories	
LED-CHL-45-1200-EC	Solid end caps for LED-CHL-45-1200
LED-CHL-45-1200-EC-H	End caps for LED-CHL-45-1200 with holes

Model Number	Description	Length	Height	Width	Finish
LED-CHL-45-1200	45° wide angled architectural aluminum channel	48"	1-1/4"	1-5/8"	Brushed Aluminum