

RSD Downlight

120V Regressed Slim Downlight

GM Lighting®

Project Name	Type
--------------	------

Catalog #	Date
-----------	------

PRODUCT OVERVIEW

Easy to install with an included junction box that is connected via a modular jack, these 3", 4" and 6" slim mount, regressed downlights feature superior optics along with Energy Star rating in a streamlined, shallow mount design.

FEATURES

- 120V
- Selectable: 2700K, 3000K, 4000K
- Wet location
- IC rating for insulated ceilings
- Edge-Lit technology for diode free illumination
- Dimmable (Triac)

SPECIFICATIONS

ELECTRICAL

- 120V
- 9.0W, 12W, 15W

OPTICS

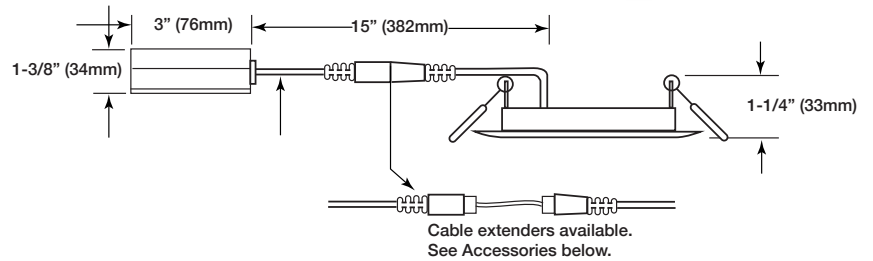
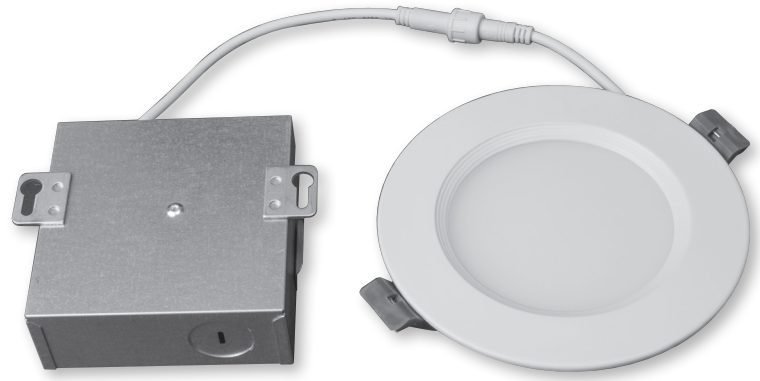
- 90+ CRI
- 120° beam angle

LABEL

- ETL
- Title 24 - JA8
- Energy Star

WARRANTY

- 5 years

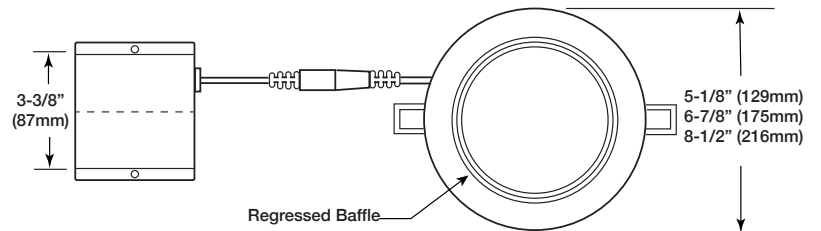


CUT-OUT DIMENSIONS

RSD-4: 4-1/4" DIA.

RSD-6: 6-1/8" DIA.

RSD-8: 7-3/4" DIA.



ORDERING INFORMATION

	-		-		-	
--	---	--	---	--	---	--

Model	-	Diameter	Color Temp.	Finish	Wattage	Lumens
RSD		4 (5-1/8" dia.)	TUN	WH (WHITE)	9W	516, 579, 570
		6 (6-7/8" dia.)			12W	827, 933, 891
		8 (8-1/2" dia.)			15W	900, 925, 950

CONNECTORS AND ACCESSORIES

Catalog No.	Description
RSD-5FT-EXT	5' EXTENSION CORD FOR RSD SERIES DOWNLIGHTS
RSD-10FT-EXT	10' EXTENSION CORD FOR RSD SERIES DOWNLIGHTS
RSD-20FT-EXT	20' EXTENSION CORD FOR RSD SERIES DOWNLIGHTS
UNV-NCP	NEW CONSTRUCTION PLATE FOR ALL RSD SERIES DOWNLIGHTS

GM Lighting®