

PAIRING YOUR OUTLET TO VOICE CONTROL

GM Lighting's LUXcontrol is your gateway to enabling Smart Home lighting control. Once you have the outlet recognized by the LUXcontrol app (see set-up instructions at right), follow your Alexa® or GoogleHome™ instructions to introduce LUXcontrol lighting to your Smart Home voice system.

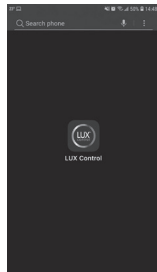
If you still have questions or need extra help, we're here for you! See our website:

www.gmlighting.net

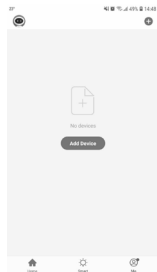
DOWNLOADING, INSTALLING and CONNECTING the LUXcontrol APP to YOUR HANDHELD DEVICE

GM Lighting's LUXcontrol app is a free utility that enables total control over your residential or commercial lighting application, along with other appliances that the app may find.

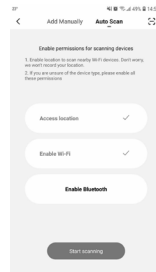
Follow the step by step instructions at right. If you are having difficulty, check your Wi-Fi connection and insure that your SHWO Smart Home Outlet is installed correctly and is manually able to dim your lighting.



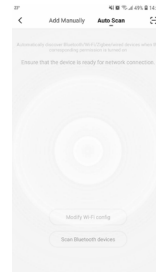
1. Download and install the App LUX Control



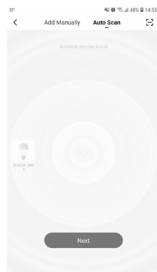
2. Open the App and press "Add Device"



3. Press "Auto Scan" on top to start pairing



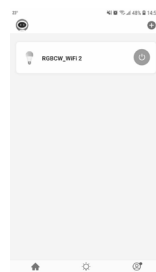
4. During Auto Scan, cycle dimmer On/Off 3 times. Outlet will be recognized.



5. Found Outlet! Press "Next".



6. Outlet added! Press "Done" at upper left.



3. Press the paired Outlet.



Ready to configure and use!

GM Lighting®



SHWO Smart Home Outlet Installation and Programming Instructions

BEFORE YOU START:

Download GM's LUXcontrol™ app from the App Store or Google® Play. Or, scan the QR code for auto download. We will guide you through programming after we help you install your dimmer.



KEY SPECIFICATIONS

Input: 100-130VAC, 60Hz

Single Output: 10A Max. / Socket

Total Output: 15A Max.

USB Output: 5V/ 2.1A

Working Temperature: -4°F - 120°F

W-Fi Frequency: 2.4Ghz only

No hub required

UL60950, UL498, FCC Part15

Android™ compatible

iOS® compatible

Works with Google Assistant™

Works with Amazon Alexa™

Amazon, Alexa and all related logos are trademarks of Amazon.com, Inc. or its affiliates. 'iOS' is a registered trademark of Apple.

SYSTEM REQUIREMENTS

Existing Wi-Fi 2.4GHz Network

Existing single pole circuit and outlet box with neutral wire

Mobile device running IOS® 10.0 or higher,

Android™ 8.0 and above

GM Lighting LUXcontrol™ App (see 'Before You Start')

OUTLET INSTALLATION:

The SHWO is a 'smart' outlet that is designed to replace a standard wall outlet using existing wiring. The SHWO provides a two USB power sockets. SHWO outlet can be controlled via the LUXcontrol app.

Turn the POWER OFF at the circuit breaker before installing the dimmer. Read and understand these instructions before installing. This device is intended for installation pursuant to National Electric Code and local regulations. We recommend that you use a qualified electrician or electrical contractor to install.

WIRING and PROGRAMMING DIRECTIONS

1. Remove existing wall outlet and orient SHWO outlet in the proper position, with Wi-Fi Pairing button as your guide. (FIG. 1)
3. Connect the 120V power wire to the HOT terminal on the SHWO outlet (FIG. 2)
4. Connect the neutral wire WHITE to the NEUTRAL terminal on the SHWO outlet (FIG. 2)

5. Connect GREEN ground wire to the GR terminal on the SHWO outlet (FIG. 2)

6. Push SHWO outlet into place making sure that wires are securely connected and screw to outlet box.

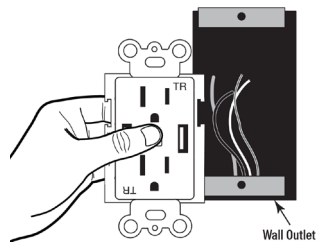


FIG. 1

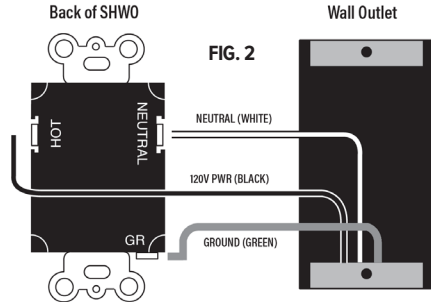
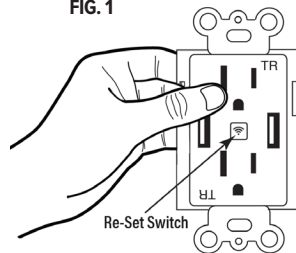


FIG. 2

7. Wall plate screws onto SHWO outlet (FIG. 5). Also can accommodate standard, Decora plates.

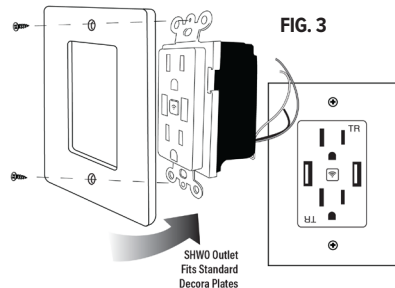


FIG. 3