

### BEFORE YOU START:

- Read and follow all instructions
- Reference local electrical codes
- Mount power supply at a height greater than 1 foot.

### NOTE: 100% to 20% Dimmable.

To ensure good dimming results, the driver requires a minimum load of 25%-80% of total capacity. Working temp is -13F to 104F. Drivers are dimmable with the following dimmers:

### Recommended Dimmers

LUTRON DVLV600  
LUTRON DVCL153

**SAFETY WARNING:** Reference the National Electrical Code regulations. Installation work and electrical wiring should be done by qualified person(s) in accordance with all applicable codes and standards. Modifying or disassembling beyond instructions will void the warranty for this product. Do not submerge or install within 5 feet of a swimming pool. Failure to follow safety warnings, and installation instructions will void the warranty for this product.

FIG. 1

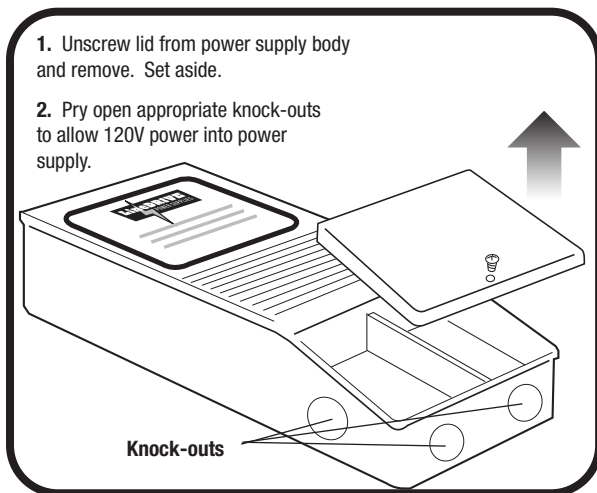
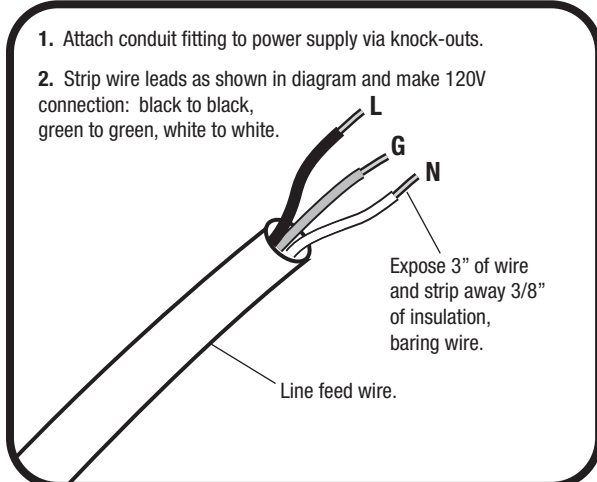
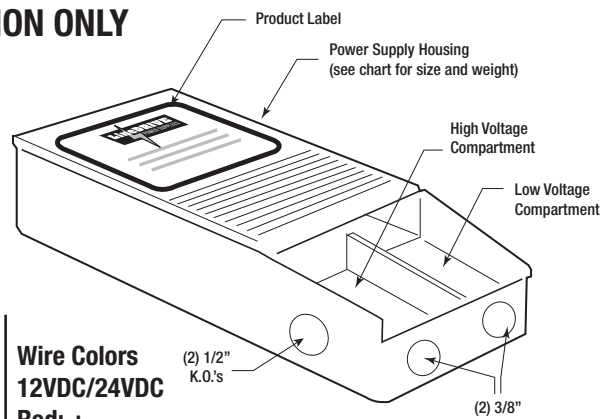


FIG. 2



### DRY LOCATION ONLY



### 120V Wiring

Black (power)

White (Neutral)

Ground

Wire Colors  
12VDC/24VDC  
Red: +  
Black: -

Catalog No.	Size	Voltage / Watts	Weight
LD-ED-UNV20-12	6.97"L x 2.76"W x 1.40"H	12V / 20W	.75 lbs
LD-ED-UNV20-24	6.97"L x 2.76"W x 1.40"H	24V / 20W	.75 lbs.
LD-ED-UNV40-12	6.97"L x 2.76"W x 1.40"H	12V / 40W	1.3 lbs.
LD-ED-UNV40-24	6.97"L x 2.76"W x 1.40"H	24V / 40W	1.3 lbs.
LD-ED-UNV60-12	6.97"L x 2.76"W x 1.40"H	12V / 60W	1.5 lbs.
LD-ED-UNV60-24	6.97"L x 2.76"W x 1.40"H	24V / 60W	1.5 lbs.
LD-ED-UNV96-24	6.97"L x 2.76"W x 1.40"H	24V / 96W	1.5 lbs.
LD-ED-UNV150-12	10.20"L x 4.20"W x 1.90"H	12V / 150W	4.6 lbs.
LD-ED-UNV200-24	10.20"L x 4.20"W x 1.90"H	24V / 192W	4.6 lbs.
LD-ED-UNV300-24	10.20"L x 4.20"W x 1.90"H	24V / 288W	4.75 lbs.

To calculate total watts multiply (Watts per ft.) x (Total Length of Run) = Total Watts  
It is recommended to have 25% - 80% loading for optimal performance.

FIG. 3

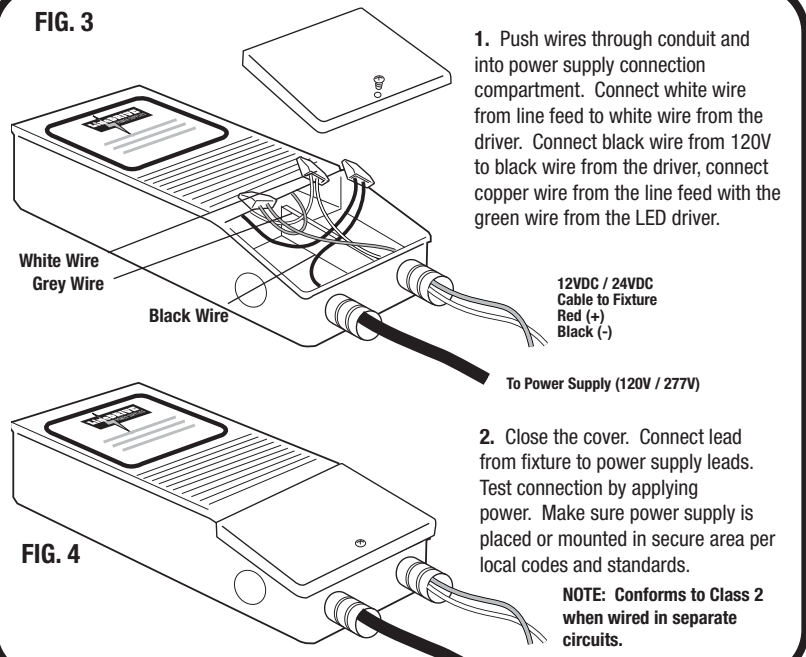


FIG. 4