

# LTR-P Professional Series

## Wet Location, 24VDC 1.5W / 3.0W / 5.8W LED Tape Specification Sheet



Project Name	Type
--------------	------

Catalog #	Date
-----------	------

### PRODUCT OVERVIEW

GM's Professional Outdoor Series Flexible LED Tape combines style and technology with reliability for wet location. Designed for professional installations that demand a high level of quality, the LTR-P Series boasts a wide array of key features and is available in 16'-4" (5M), 98'-6" (30M) reels or custom cuts. Do not submerge in water.

### FEATURES

- 24VDC
- 2400K, 2700K, 3000K, 3500K, 4000K and 5000K as well as Amber, Red, Green, Blue color temps
- Remote control with GM's LUXcontrol™ App and controllers (requires NEMA box - by others)
- LM80 / IP65
- 120 LEDs per meter
- Cuttable every 2"
- Wet location
- Optical clear UV protected silicone sheath
- Premium diodes
- 120° viewing angle
- Dimmable
- Maximum run on a given lead is 60' (1.5W), 32'-8" (3.0W), 16'-4" (5.8W)



Install Sheet



### SPECIFICATIONS

#### ELECTRICAL

- 24V
- 1.5W, 3W and 5.8 watts per foot

#### OPTICS

- 90+ CRI

#### OPERATING TEMP

- -4°F to 122°F
- For proper thermal management, we recommend to mount this product in a channel

#### CERTIFICATION

- UL
- May comply with Title 24 with select power supplies
- Class 2
- Closet Rated. Compliant with NFPA 70, NEC section 410.16 (A)(3) and 410.16 (C)(5), excluding colors -AM, -BL, -RD, -GR and LTR-P-WP-24V-1.5W

#### WARRANTY

- 5-year warranty when paired with GM power supply
- Note: Do not install in an application that is not easily accessed for service. Our warranty covers product only and does not cover any labor or incidental charges related to service or warranty.

### ORDERING INFORMATION

Example: LTR-P-WP-24V-3W-24K-16

Model	Series	Location	Voltage	Wattage	Color Temp	Reel Length
LTR	P	WP	24V	1.5W	24K	16
					27K	
				3W	30K	100
					35K	
					40K	
5.8W	50K	*FT				
LTR	P	WP	24V	1.5W	AM	100
					RD	
					GR	
					BL	

Reel Length: 16 = 16'-4"; 100=98'-6"

\* Custom cuts available, consult factory

# LTR-P Professional Series

## Wet Location, 24VDC 1.5W / 3.0W / 5.8W LED Tape Specification Sheet



Catalog No.	Length	Lumens	CRI	Color Temp.	Max. Run
LTR-P-WP-24V-1.5W-24K-16 /-100 /-FT	16'-4" / 5M or, 98'-6" / 30M or, CUSTOM CUT FEET-INCHES (CUTS MADE IN 2" INCREMENTS)	102	90+	2400K	60'
LTR-P-WP-24V-1.5W-27K-16 /-100 /-FT		109	90+	2700K	60'
LTR-P-WP-24V-1.5W-30K-16 /-100 /-FT		121	90+	3000K	60'
LTR-P-WP-24V-1.5W-35K-16 /-100 /-FT		121	90+	3500K	60'
LTR-P-WP-24V-1.5W-40K-16 /-100 /-FT		136	90+	4000K	60'
LTR-P-WP-24V-1.5W-50K-16 /-100 /-FT		144	90+	5000K	60'
LTR-P-WP-24V-1.5W-AM-100 / -FT	98'-6" / 30M or, CUSTOM CUT FEET-INCHES (CUTS MADE IN 2" INCREMENTS)	N/A	N/A	Amber	60'
LTR-P-WP-24V-1.5W-RD-100 / -FT		N/A	N/A	Red	60'
LTR-P-WP-24V-1.5W-GR-100 / -FT		N/A	N/A	Green	60'
LTR-P-WP-24V-1.5W-BL-100 / -FT		N/A	N/A	Blue	60'
LTR-P-WP-24V-3.0W-24K-16 /-100 /-FT	16'-4" / 5M or, 98'-6" / 30M or, CUSTOM CUT FEET-INCHES (CUTS MADE IN 2" INCREMENTS)	210	90+	2400K	32'-8"
LTR-P-WP-24V-3.0W-27K-16 /-100 /-FT		225	90+	2700K	32'-8"
LTR-P-WP-24V-3.0W-30K-16 /-100 /-FT		242	90+	3000K	32'-8"
LTR-P-WP-24V-3.0W-35K-16 /-100 /-FT		246	90+	3500K	32'-8"
LTR-P-WP-24V-3.0W-40K-16 /-100 /-FT		254	90+	4000K	32'-8"
LTR-P-WP-24V-3.0W-50K-16 /-100 /-FT		265	90+	5000K	32'-8"
LTR-P-WP-24V-5.8W-24K-16 /-100 /-FT	16'-4" / 5M or, 98'-6" / 30M or, CUSTOM CUT FEET-INCHES (CUTS MADE IN 2" INCREMENTS)	390	90+	2400K	16'-4"
LTR-P-WP-24V-5.8W-27K-16 /-100 /-FT		404	90+	2700K	16'-4"
LTR-P-WP-24V-5.8W-30K-16 /-100 /-FT		423	90+	3000K	16'-4"
LTR-P-WP-24V-5.8W-35K-16 /-100 /-FT		462	90+	3500K	16'-4"
LTR-P-WP-24V-5.8W-40K-16 /-100 /-FT		473	90+	4000K	16'-4"
LTR-P-WP-24V-5.8W-50K-16 /-100 /-FT		493	90+	5000K	16'-4"

Includes (20) silicon mounting clips and screws, (2) silicon end caps.  
Kelvin temperature (color) ±100K.

**DO NOT SUBMERGE DIRECTLY IN WATER.**  
WE RECOMMEND A 25% TO 80% LOAD FOR OPTIMAL PERFORMANCE.  
SEE WEBSITE FOR COMPLETE LIST OF POWER SUPPLIES AND COMPATIBLE DIMMERS.

### ACCESSORIES

Model	Description
LTR-P-WP-TPC-12	Tape to power supply wet location connector
LTR-P-WP-TTC-3	3" tape to tape wet location connector
LTR-P-WP-TTC-6	6" tape to tape wet location connector
LTR-P-WP-TTC-12	12" tape to tape wet location connector
LTR-P-WP-TTC-24	24" tape to tape wet location connector
LTR-P-WP-EC	End cap for wet location tape

### Your LED Tape Specification Checklist:

1. Select Tape
2. Select Connectors
3. Select Channels
4. Select Controllers
5. Select Power Supplies

# LTR-P Professional Series

## Wet Location, 24VDC 1.5W / 3.0W / 5.8W LED Tape Specification Sheet



### COMPATIBLE CONTROLLERS

Model	Description
SHWC	LUXcontrol Smart 2.4 GHz WiFi Controller, Standard 12V/24V Low Voltage, see page 8
SHWD	LUXcontrol Smart 2.4 GHz WiFi Dimmer, Standard 12V/24V Low Voltage, see page 8
SWD-60W-24VDC-DIM	SwitchLD All-in-One Dimmer and Driver, 60W, 24VDC see page 10
SWD-100W-24VDC-DIM	SwitchLD All-in-One Dimmer and Driver, 100W, 24VDC see page 10

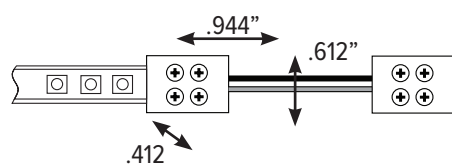
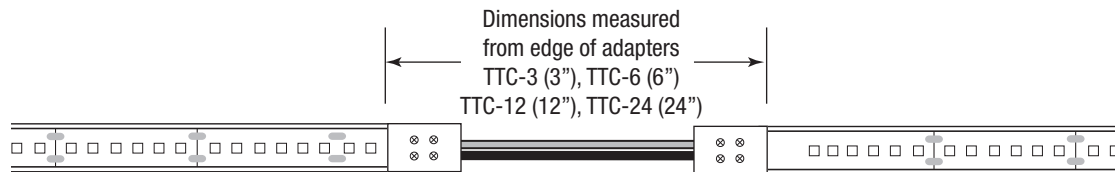
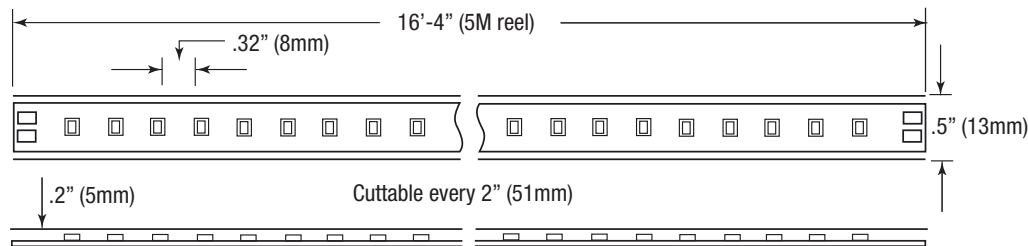
Note: For wet location applications, use NEMA box (by others)

### RECOMMENDED DRIVERS

Catalog No.	Description	Watts	Specification Sheet
LD-XD-UNV	LineDrive Electronic Multi-Dimmable Power Supply, 12VDC or 24VDC	20W, 40W, 60W, 96W, 180W, 200W, 300W	View Spec Sheet
LD-E-UNV	LineDrive Electronic Non-Dimmable Power Supply, 12VDC or 24VDC	30W, 60W, 96W, 200W, 300W	View Spec Sheet
LD-MD-UNV	LineDrive Magnetic Dimmable Power Supply, 12VDC or 24VDC	30W, 60W, 96W, 150W, 200W, 300W	View Spec Sheet
LD-EDM	LineDrive Electronic Dimmable MINI Power Supply, 12VDC or 24VDC	60W	View Spec Sheet
LTP	Cord and Plug Power Supply, 12VDC or 24VDC	25W, 48W, 60W, 90W	View Spec Sheet
PSD	Electronic Dimmable Power Supply, 12VDC or 24VDC	15W, 24W, 60W, 90W	View Spec Sheet

Please see our website for updated power supply specifications and information.

### DIMENSION



LTR-P-WP  
Wet Location  
Connector

# LTR-P Professional Series

## Wet Location, 24VDC 1.5W / 3.0W / 5.8W LED Tape Specification Sheet



### EXTRA DEEP

Catalog No.	Description	Length	Dimensions
LED-CHL-XD	Extra deep format extruded channel. Includes snap-on frosted lens with mounting clips and screws.	4'	
LED-CHL-XD-8	Extra deep format extruded channel. Includes snap-on frosted lens with mounting clips and screws.	8'	
LED-CHL-XD-AMC	(2) Adjustable mounting brackets for LED-CHL-XD	N/A	
LED-CHL-XD-EC	(2) End caps for LED-CHL-XD. One solid, one with hole.	N/A	
LED-CHL-XD-MC	(2) Mounting clips and screws for LED-CHL-XD	N/A	

### EXTRA DEEP FLANGED

LED-CHL-XD-F	Extra deep format extruded channel with flange. Includes snap-on frosted lens with mounting clips and screws.	4'	
LED-CHL-XD-F-8	Extra deep format extruded channel with flange. Includes snap-on frosted lens with mounting clips and screws.	8'	
LED-CHL-XD-F-DC	(2) Drywall mounting brackets for LED-CHL-XD-F	N/A	
LED-CHL-XD-F-EC	(2) End caps for LED-CHL-XD-F. One solid, one with hole.	N/A	

### 45° LARGE ANGLE MOUNT

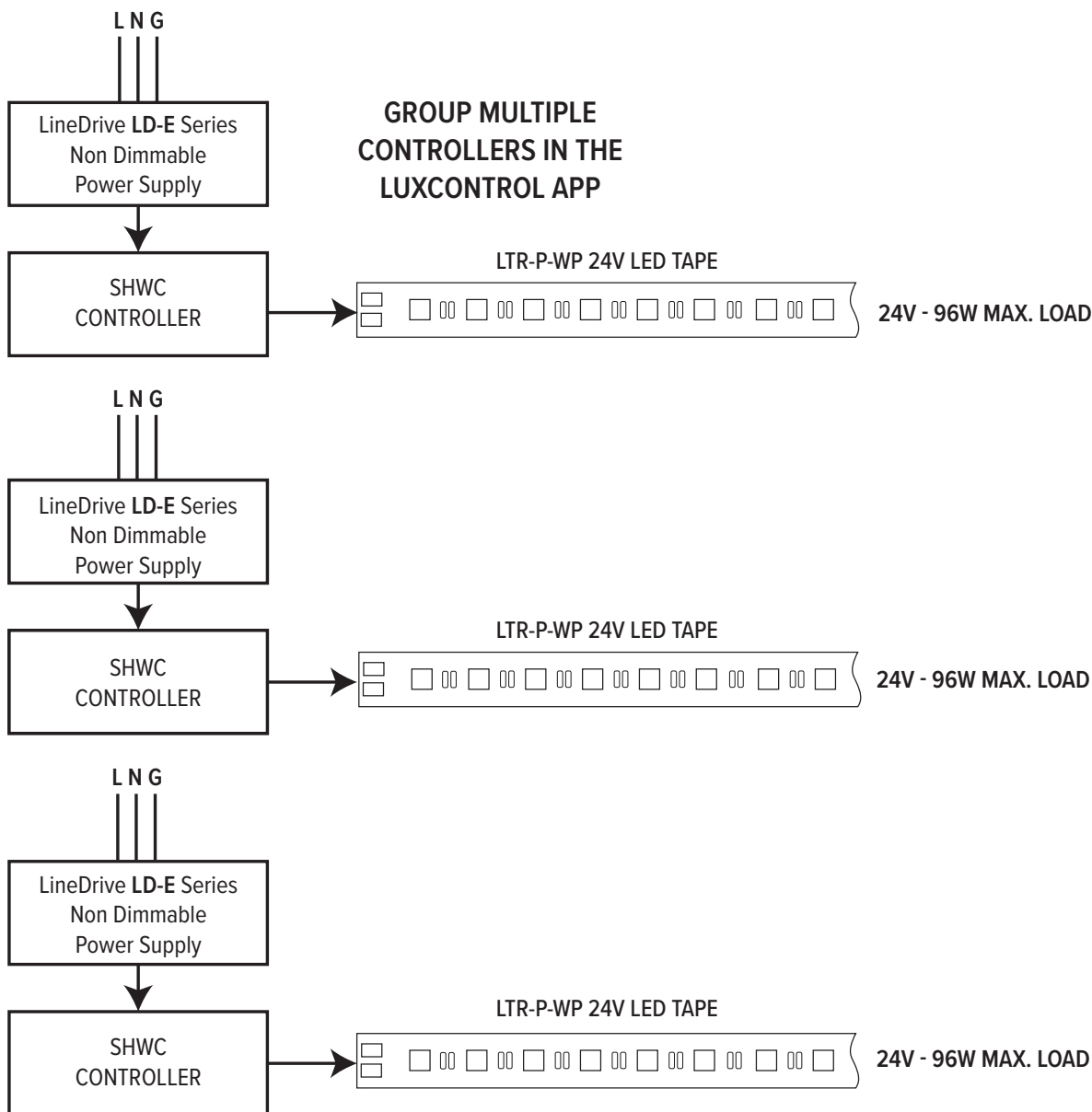
LED-CHL-45-1200	Extruded angled (45°) channel. Includes snap-on frosted lens with mounting clips and screws.	4'	
LED-CHL-45-1200-EC	(2) End caps for LED-CHL-45 - one solid, one with hole	N/A	
LED-CHL-45-1200-MC	(2) Additional mounting clips for LED-CHL-45-1200	N/A	

# LTR-P Professional Series

## Wet Location, 24VDC 1.5W / 3.0W / 5.8W LED Tape Specification Sheet



### SHWC LUXCONTROL WIFI CONTROLLER

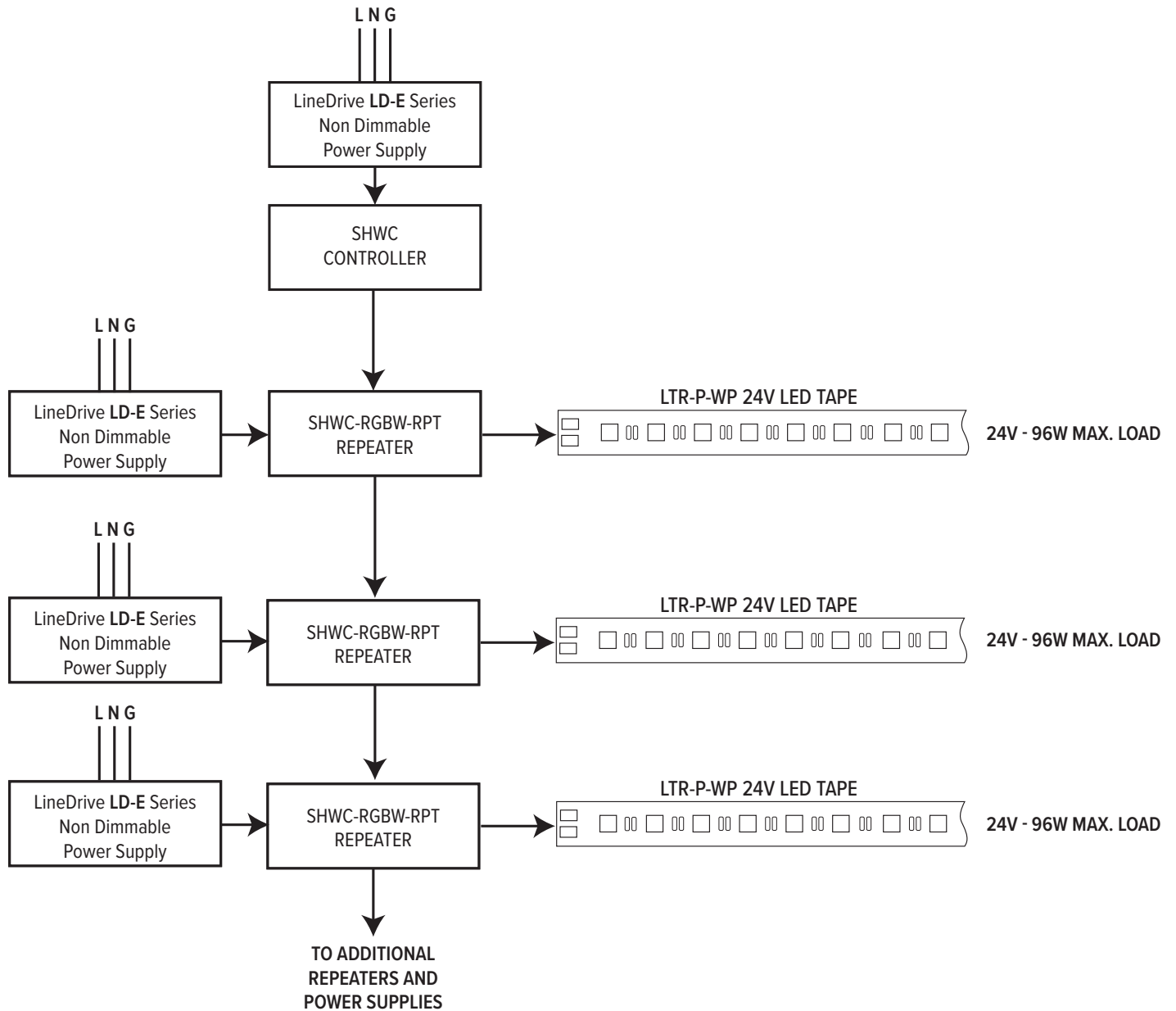


# LTR-P Professional Series

Wet Location, 24VDC 1.5W / 3.0W / 5.8W  
LED Tape Specification Sheet



## SHWC LUXCONTROL WIFI CONTROLLER WITH POWER REPEATER

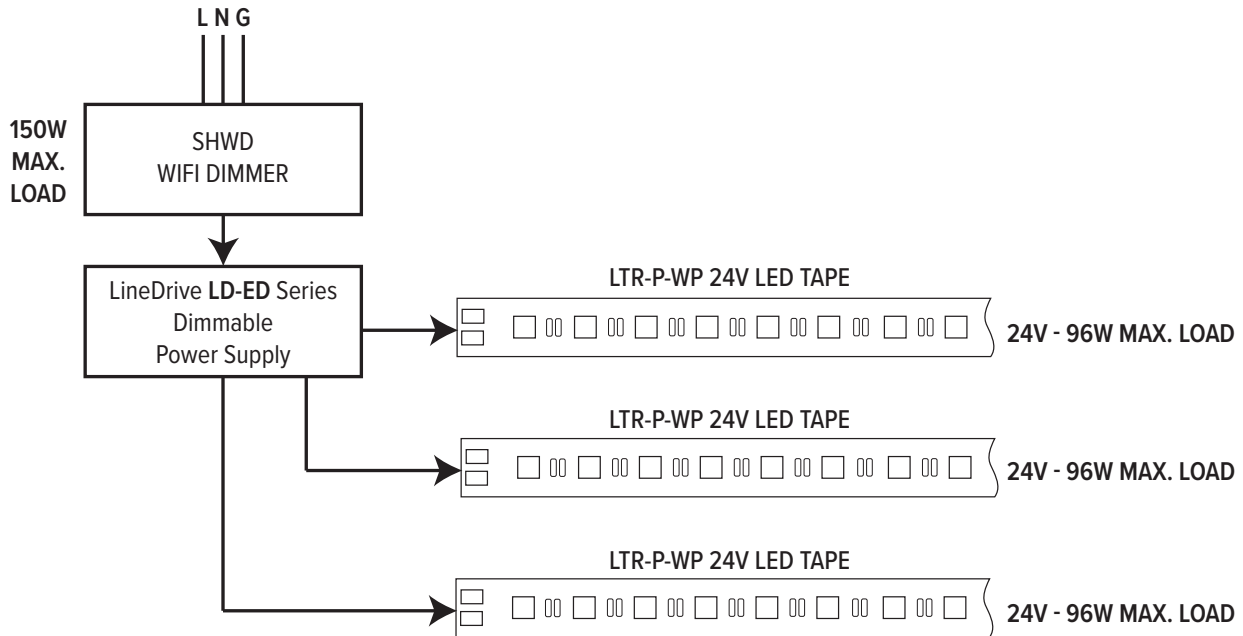


# LTR-P Professional Series

Wet Location, 24VDC 1.5W / 3.0W / 5.8W  
LED Tape Specification Sheet



## SHWD LUXCONTROL WIFI DIMMER



## SWITCHLD SWD DRIVER AND DIMMER

