

LTR-S Specification Series

24VDC RGBW Wet Location LED Tape Specification Sheet

GMLighting®

Project Name	Type
Catalog #	Date

PRODUCT OVERVIEW

GM's RGBW is a quantum leap beyond RGB. With the addition of a 3000K White element, a virtually unlimited palette of color and brightness is enabled. For general activity use, utilize the white light component. Designed for outdoor (wet) location high quality light illumination. Available in 16'-4" (5M) or 32'-8" (10M) reels.



FEATURES

- RGB with 3000K White 4-in-One LED chip
- Wet (outdoor) location
- Cuttable every 4"
- Cut and cap only
- Custom lengths available - consult factory
- 60 LED's / meter
- 120° viewing angle
- 3M adhesive back
- Maximum run on a given lead is 32'-8"

SPECIFICATIONS

ELECTRICAL

- 24V
- 3W per foot

OPERATING TEMP

- -4°F to 122°F

NOTE: WET LOCATION IS NON-JOINABLE IN THE FIELD.
CUT AND CAP ONLY. RUN NOT TO EXCEED MAX. RUN LENGTH.

CERTIFICATION

- UL
- Class 2
- Closet Rated

WARRANTY

- 5-year warranty when paired with GM power supply.
Note: 24V non-dimming power supply required.



ORDERING INFORMATION

Example: LTR-S-24V-WP-3.0W-RGBW-16

Model	Series	Voltage	Location	Wattage	Type	Reel Length
LTR	S	24V	WP	3.0W	RGBW	16
LTR	S	24V	WP	3.0W	RGBW	32

ACCESSORIES

Model	Description
RGBW-WP-TPC60	RGBW wet location, tape to power connector
RGBW-WP-TTC3	RGBW wet location, tape to tape connector

Your LED Tape Specification Checklist:

1. Select Tape
2. Select Connectors
3. Select Channels
4. Select Controllers
5. Select Power Supplies

INSTALL SHEET



SCAN ME

LTR-S Specification Series

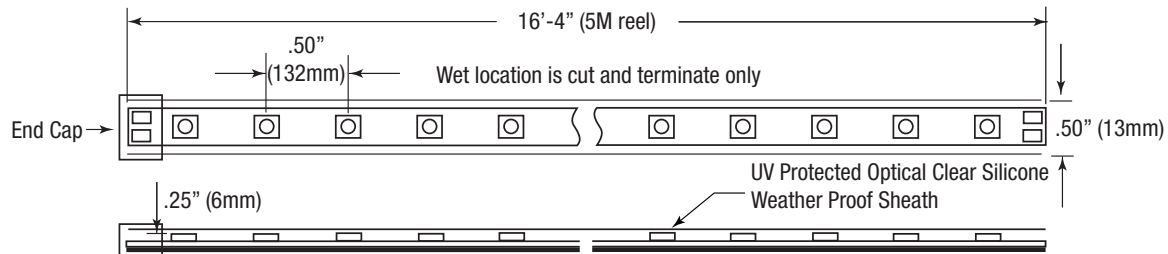
24VDC RGBW Wet Location LED Tape Specification Sheet

GMLighting®

Catalog No.	Length	Wattage / ft.	Lumens in 3000K mode only	Type	Max. Run
LTR-S-24V-WP-3.0W-RGBW-16	16'-4" / 5M	3W	210	RGBW-WP	32'-8"
LTR-S-24V-WP-3.0W-RGBW-32	32'-8" / 10M	3W	210	RGBW-WP	32'-8"

Kelvin temperature (color) ±100K.
16'-4" reel includes 24" lead affixed to tape. RGBW-WP includes 48" lead affixed to tape and a cut and cap kit.

DIMENSION



**All wet location connectors
are factory installed only**



LTR-S Specification Series

24VDC RGBW Wet Location LED Tape Specification Sheet



COMPATIBLE CONTROLLERS

Model	Description
SHWC-RGBW	LUXcontrol Smart 2.4 GHz WiFi Controller, Standard 12V/24V Low Voltage, RGBW, 4-Channel / 5-Wire, see page 8
SHWC-RGBW-RPT	LUXcontrol Universal Smart Power Repeater, see page 9
RGBW-RWC	RGBW controller/amp with battery-powered remote, see page 5
RGBW-RP	RGBW repeater, see page 6
DMX-LT-995	5-Channel DMX Decoder 12/24VDC 6A x 5CH 30A, see page 10
RGBW-DMX-WC	DMX Wall Controller, see page 10

RECOMMENDED DRIVERS

Catalog No.	Description	Watts	Weight	Dimensions
LD-E-UNV30	12VDC / 24VDC - 30W - 120V or 277V - 50/60Hz 12V/2.5A - 24V/1.25A - Class 2 Auto reset.	30W	1.0 lbs.	6.10"L x 3.35"W x 1.33"H
LD-E-UNV60	12VDC / 24VDC - 60W - 120V or 277V - 50/60Hz 12V/5A - 24V/2.5A - Class 2 Auto reset.	60W	2.5 lbs.	8.25"L x 4.10"W x 1.56"H
LD-E-UNV96-24	24VDC - 96W - 120V or 277V - 50/60Hz - 4 amps Class 2 - Auto reset.	96W	2.5 lbs.	8.25"L x 4.10"W x 1.56"H
LD-E-UNV200-24	24VDC - 192W - 120V or 277V - 50/60Hz - 4 amps per channel (2) Class 2 - Auto reset. 2 X 96W channel.	192W	4.7 lbs.	9.50"L x 6.35"W x 1.56"H
LD-E-UNV300-24	24VDC - 288W - 120V or 277V - 50/60Hz - 4 amps per channel (3) Class 2 - Auto reset. 3 X 96W channel.	288W	4.7 lbs.	9.50"L x 6.35"W x 1.56"H
Please see our website for updated power supply specifications and information.				

CORD AND PLUG DRIVERS

Catalog No.	Description	Watts	Weight	Dimensions
LTP24-48	24VDC - 48W - 2 amps - 120V - 120V Cord (72") and plug. Short circuit, overload protection - LED indicator for power on. UL listed	48W	1.8 lbs.	4.68"L x 2.05"W x 1.25"H
LTP24-90	24VDC - 90W - 3.75 amps - 120V - 120V Cord (72") and plug. Short circuit, overload protection - LED indicator for power on. UL listed	90W	1.8 lbs.	4.68"L x 2.05"W x 1.25"H
Please see our website for updated power supply specifications and information.				

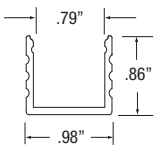
LTR-S Specification Series

24VDC RGBW Wet Location LED Tape Specification Sheet

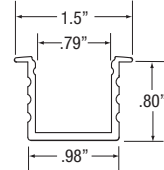
GMLighting®

COMPATIBLE CHANNELS - (fit RGBW-WP connectors on pg. 1)

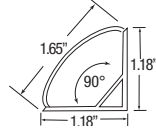
EXTRA DEEP

Catalog No.	Description	Length	Dimensions
LED-CHL-XD	Extra deep format extruded channel. Includes snap-on frosted lens with mounting clips and screws.	4'	
LED-CHL-XD-8	Extra deep format extruded channel. Includes snap-on frosted lens with mounting clips and screws.	8'	
LED-CHL-XD-AMC	(2) Adjustable mounting brackets for LED-CHL-XD	N/A	
LED-CHL-XD-EC	(2) End caps for LED-CHL-XD. One solid, one with hole.	N/A	
LED-CHL-XD-MC	(2) Mounting clips and screws for LED-CHL-XD	N/A	

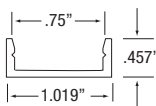
EXTRA DEEP FLANGED

LED-CHL-XD-F	Extra deep format extruded channel with flange. Includes snap-on frosted lens with mounting clips and screws.	4'	
LED-CHL-XD-F-8	Extra deep format extruded channel with flange. Includes snap-on frosted lens with mounting clips and screws.	8'	
LED-CHL-XD-F-DC	(2) Drywall mounting brackets for LED-CHL-XD-F	N/A	
LED-CHL-XD-F-EC	(2) End caps for LED-CHL-XD-F. One solid, one with hole.	N/A	

45° LARGE ANGLE MOUNT

LED-CHL-45-1200	Extruded angled (45°) channel. Includes snap-on frosted lens with mounting clips and screws.	4'	
LED-CHL-45-1200-EC	(2) End caps for LED-CHL-45 - one solid, one with hole	N/A	
LED-CHL-45-1200-MC	(2) Additional mounting clips for LED-CHL-45-1200	N/A	

WIDE

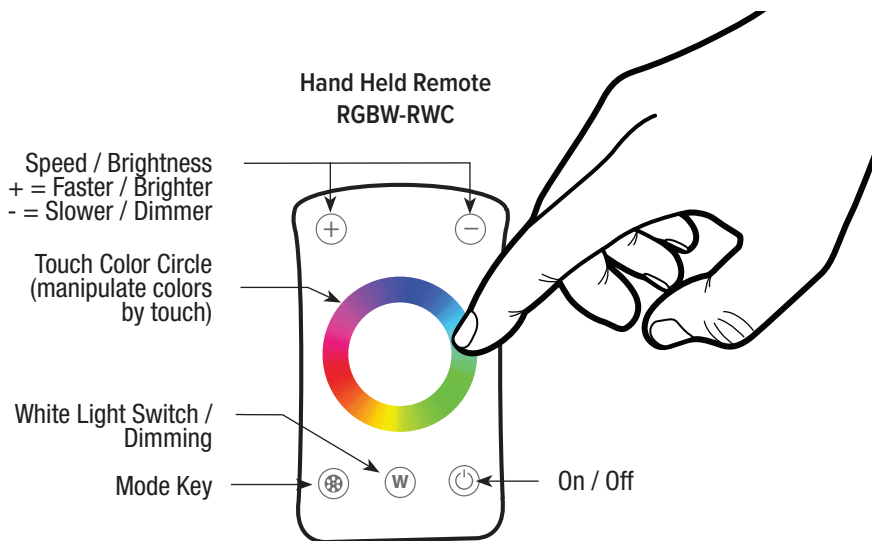
LED-CHL-W	Wide format extruded channel. Includes snap-on frosted lens with mounting clips and screws.	4'	
LED-CHL-W-8	Wide format extruded channel. Includes snap-on frosted lens with mounting clips and screws.	8'	
LED-CHL-W-AMC	(2) Adjustable mounting brackets for LED-CHL-W	N/A	
LED-CHL-W-EC	(2) End caps for LED-CHL-W - one solid, one with hole.	N/A	
LED-CHL-W-MC	(2) Additional mounting clips for LED-CHL-W	N/A	

LTR-S Specification Series

24VDC RGBW Wet Location LED Tape Specification Sheet

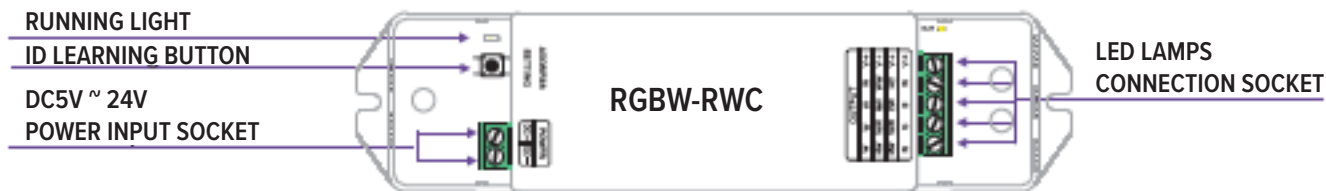
GMLighting®

RGBW-RWC HAND-HELD REMOTE CONTROLLER



No.	Mode	Instruction
1	Static Red	Brightness Adjustable
2	Static Green	Brightness Adjustable
3	Static Blue	Brightness Adjustable
4	Static Yellow	Brightness Adjustable
5	Static Purple	Brightness Adjustable
6	Static Cyan	Brightness Adjustable

No.	Mode	Instruction
7	Static White	Brightness Adjustable
8	RGB Skipping	Speed/ Brightness Adjustable
9	7 Color Skipping	Speed/ Brightness Adjustable
10	RGB Color Smooth	Speed/ Brightness Adjustable
11	Full Color Smooth	Speed/ Brightness Adjustable
12	Static Black	White light can be turn off and adjusted

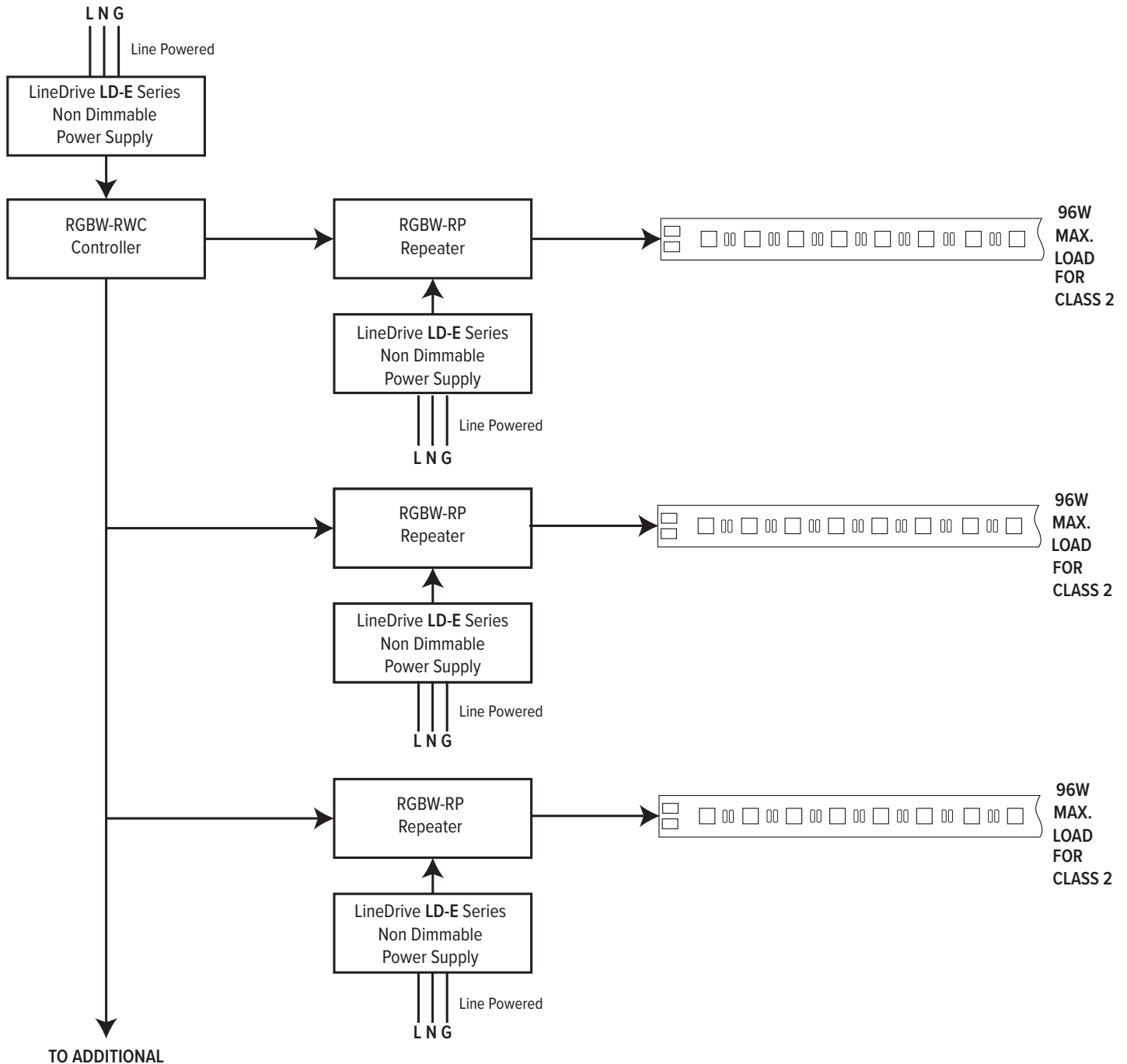


24VDC RGBW Wet Location LED Tape Specification Sheet

GMLighting®

RGBW-RWC HAND-HELD REMOTE CONTROLLER

WIRING DIAGRAM

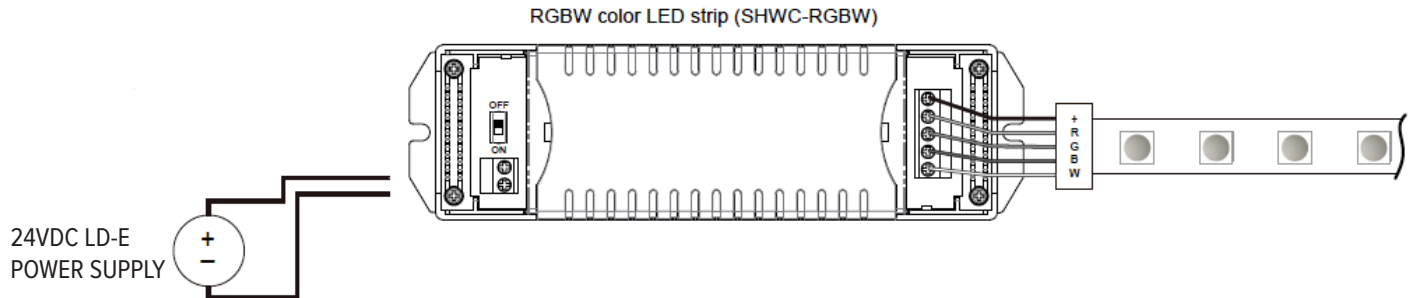


LTR-S Specification Series

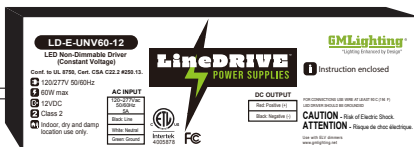
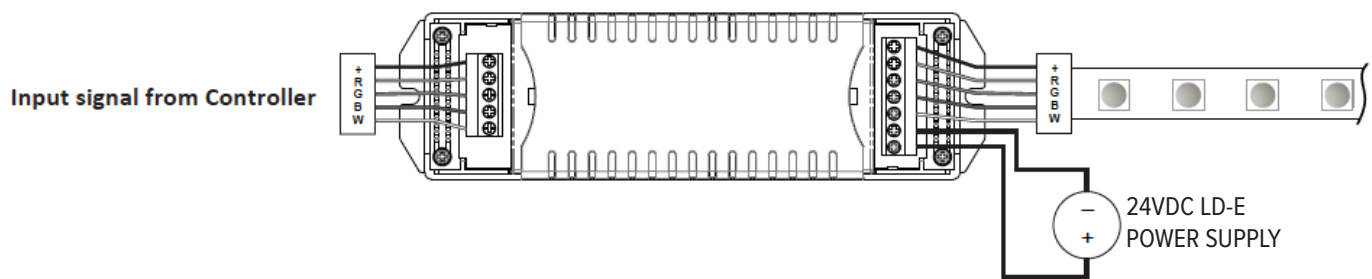
24VDC RGBW Wet Location LED Tape Specification Sheet

GMLighting®

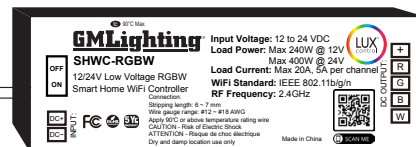
SHWC-RGBW UXCONTROL WIFI CONTROLLER



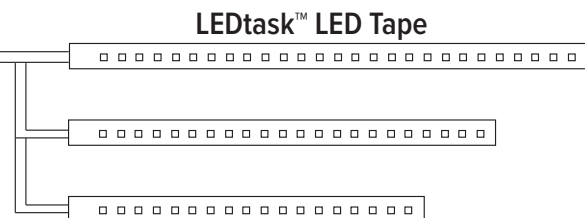
SHWC-RGBW and Repeater Wiring RGBW connection (4 channels)



LineDRIVE™ Power Supply



LUXcontrol™ Controller



LEDtask™ LED Tape



Remote WiFi Control

LUXcontrol™ App



Router Signal

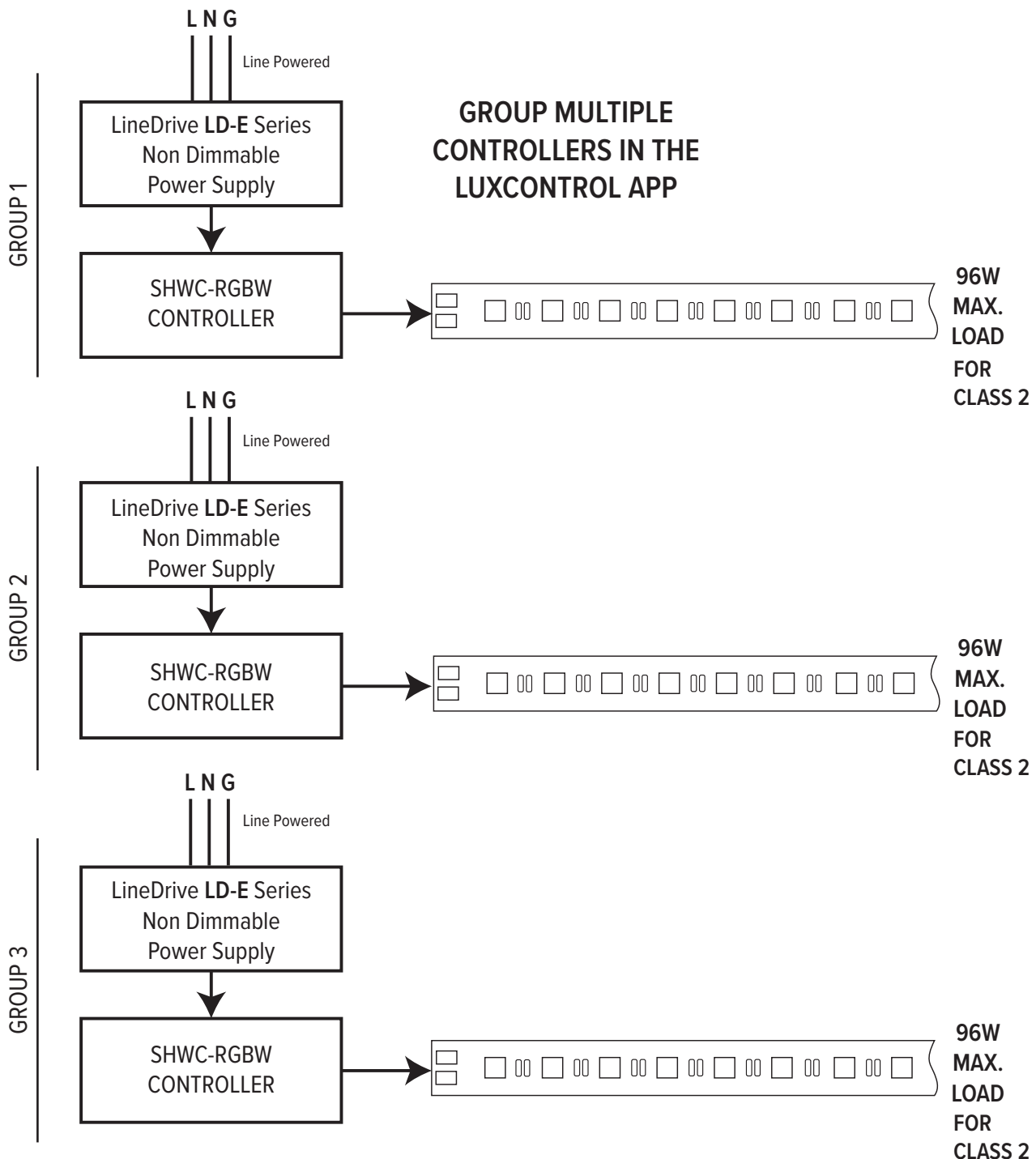
Expandable with universal power repeater
(SHWC-RGBW-RPT) for larger projects

Note: For use with LD-E (non-dimmable) or LD-ED (dimmable) power supply only. Not compatible with LD-MD (magnetic) power supply.

LTR-S Specification Series

24VDC RGBW Wet Location LED Tape Specification Sheet

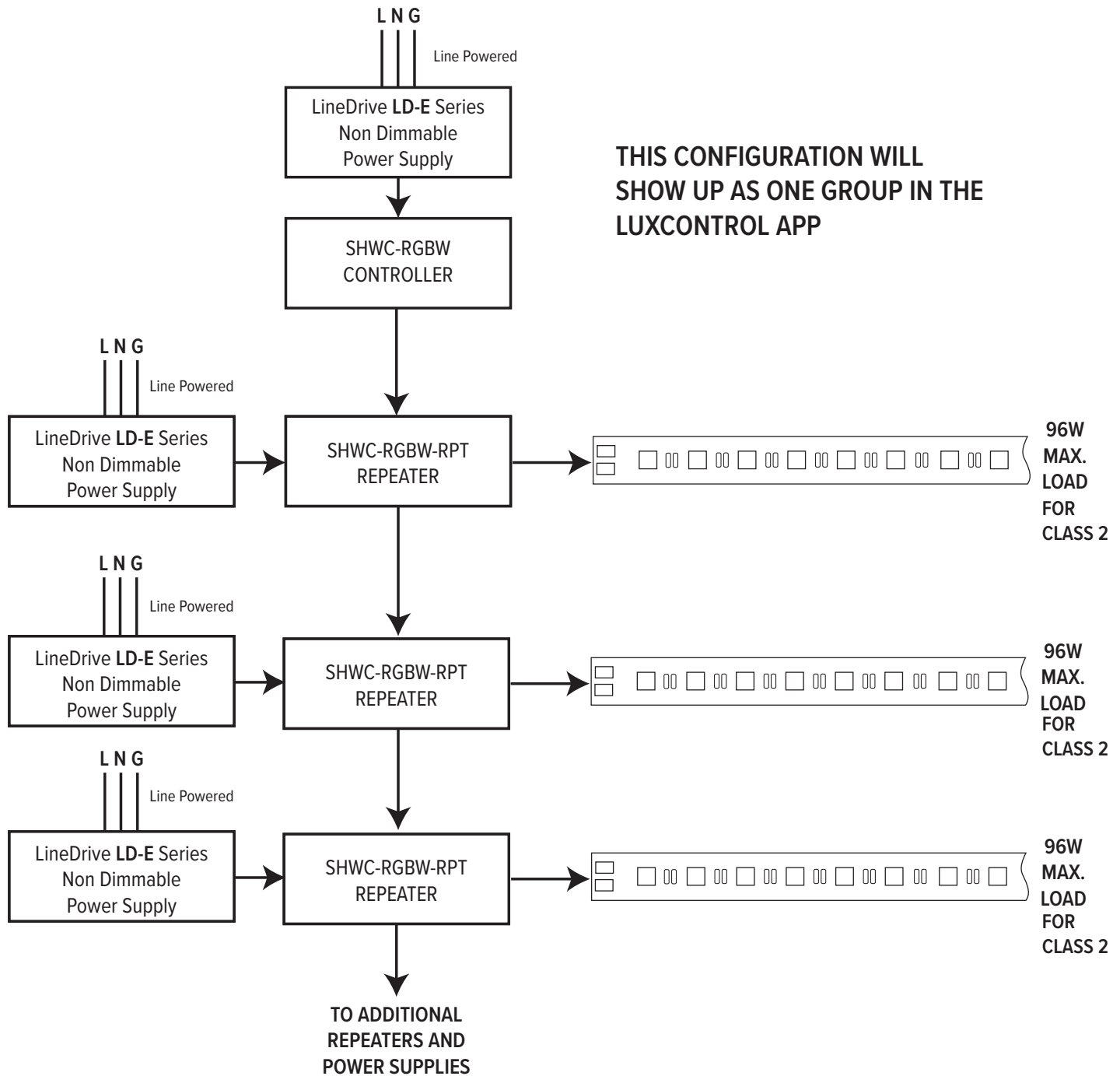
SHWC-RGBW LUXCONTROL WIFI CONTROLLER WIRING DIAGRAM



LTR-S Specification Series

24VDC RGBW Wet Location LED Tape Specification Sheet

SHWC-RGBW LUXCONTROL WIFI CONTROLLER WITH POWER REPEATER WIRING DIAGRAM



LTR-S Specification Series

24VDC RGBW Wet Location LED Tape Specification Sheet

GMLighting®

RGBW-DMX-WC DMX WALL CONTROLLER WIRING DIAGRAM

