

ALUMINUM MOUNTING CHANNEL

4' / 6' EXTRA-DEEP FLANGED FORMAT



Project Name	Type
Catalog #	Date

PRODUCT OVERVIEW

GM Lighting's LED-CHL-XD-F channel accepts all low voltage GM Lighting LED tape. Available in 48" and 72" lengths, these flanged mounting channels are the perfect vessel that not only insures an architectural quality installation, but also minimize diode imaging due to the frosted lens that is included with each channel.



FEATURES

- Available in 4ft (48in) and 6ft (72in)
- Silver Anodized, Black Anodized, White Powder Coated
- Includes 2 mounting clips and screws with 4ft, 4 mounting clips and screws with 6ft
- Includes acrylic frosted lens
- End caps sold separately
- Available without flange (see LED-CHL-XD spec sheet for flangeless option ordering information)
- For LTR Series Tape - LTR-P, LTR-S and LTR-E
- Custom lengths available - consult factory
- Dry location only

Note: For Vision120, use V120-CHL channels.

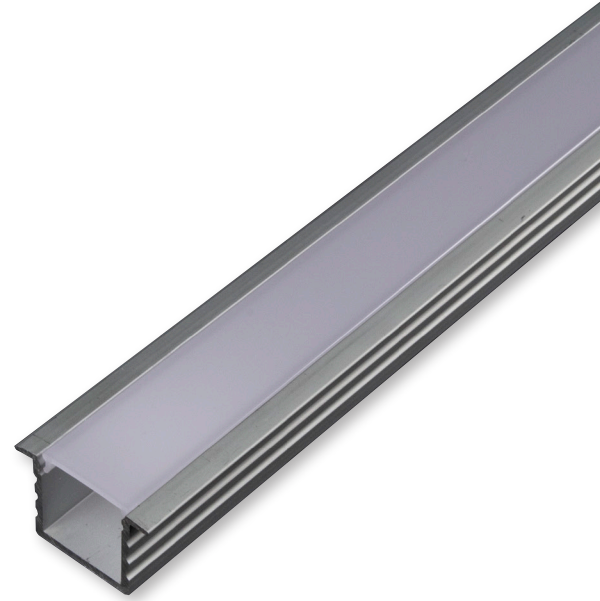
SPECIFICATIONS

ELECTRICAL

- Fits 12V/24V LEDtask LED tape

WARRANTY

- 5-year warranty



ORDERING INFORMATION

Example: LED -CHL-XD-F-6-WH

Model	Type	Format	Length	Color
LED-CHL	XD	F	Blank (4 ft.)	Blank (Silver Anodized)
			6 (6 ft.)	WH (White Powder Coated)
				B (Black Anodized)

Accessories

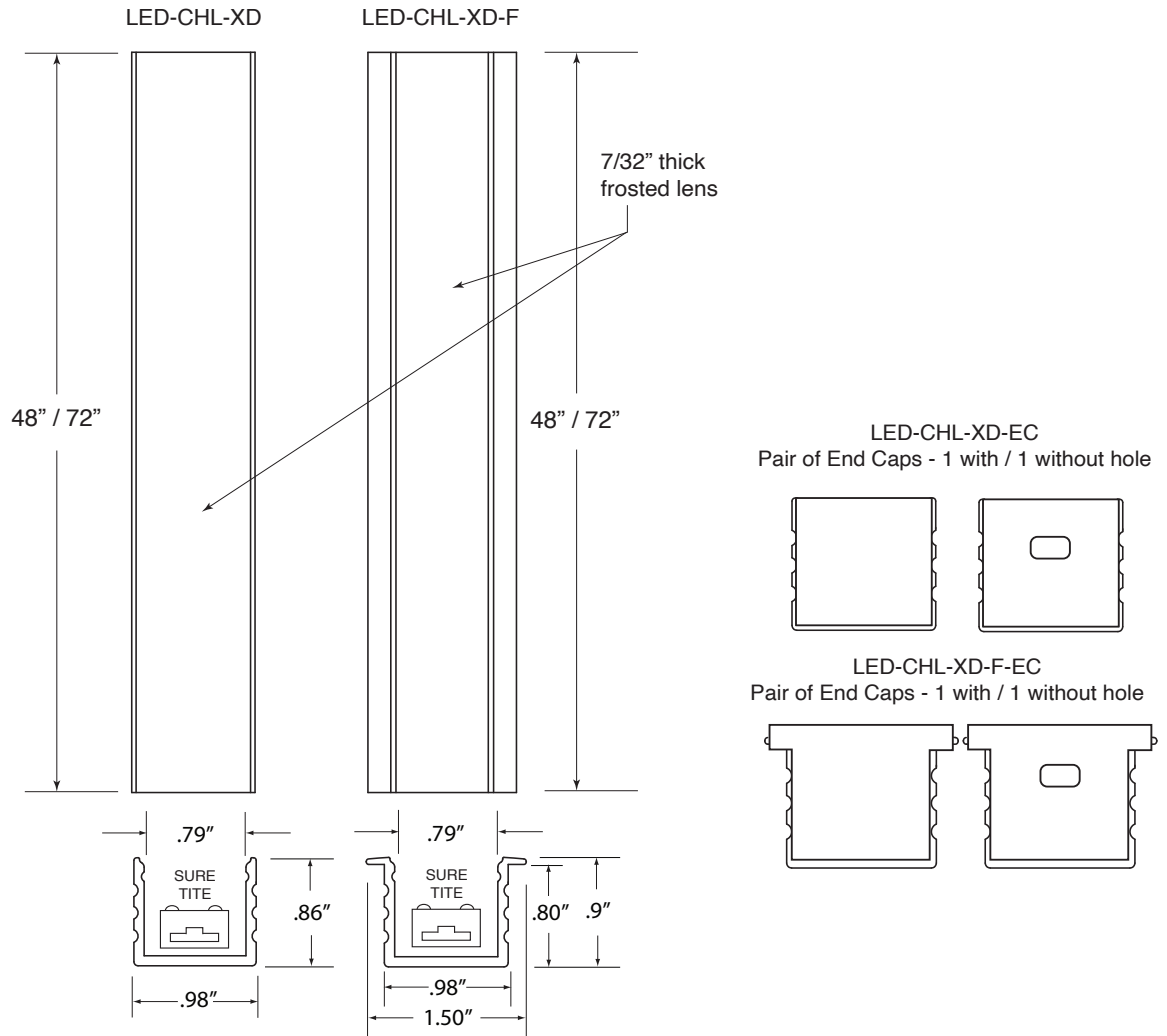
Model	Description
LED-CHL-XD-F-DC	(2) Drywall mounting brackets (stainless steel)
LED-CHL-XD-F-EC	(2) End caps - one solid, one with wiring hole
LED-CHL-XD-F-MC	(2) Mounting clips (stainless steel)

ALUMINUM MOUNTING CHANNEL

4' / 6' EXTRA-DEEP FLANGED FORMAT

Model	Dimensions	Connectors	Compatibility	Finish
LED-CHL-XD-F	L48" or 72" x W 1.5" x D.80"	Sure-Tite and EZ Connectors	LTR-P, LTR-S, LTR-E Series Dry and Wet Location	Blank (Silver Anodized)
LED-CHL-XD-F-6				WH (White Powder Coated)
LED-CHL-XD-F-WH				
LED-CHL-XD-F-6-WH				
LED-CHL-XD-F-B				B (Black Anodized)
LED-CHL-XD-F-6-B				

DIAGRAM



DIMENSIONS