

# LED-CHL2

## Multi-Color Aluminum Mounting Channel

The GM Lighting LED-CHL2 channel is a versatile and stylish solution designed to seamlessly integrate with most low voltage GM Lighting LED tapes and EST connectors for easy installation. Compatible with various tape widths (see catalog for details), these channels are available in 4ft (48in) and 6ft (72in) lengths, and come in multiple finishes: clear anodized silver, white, or black.

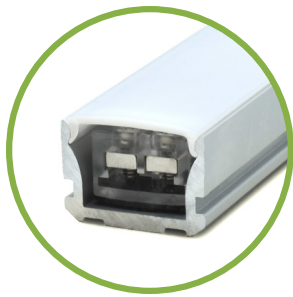
Ideal for blending with diverse architectural styles, the standard white lens provides soft, direct light, while the black lens and channel offer a dynamic effect by minimizing the view of the channel and lens. Each 4ft channel includes 2 mounting clips and screws, and each 6ft channel includes 4 mounting clips and screws for secure installation.

Designed for select LTR Series Tapes (LTR-P, LTR-S, and LTR-E), the LED-CHL2 channel is a perfect choice for enhancing any lighting project with a touch of sophistication and functionality.

- 4ft (48in) and 6ft (72in) length
- Available in clear anodized silver, white or black finish with white acrylic lenses
- Includes 2 with 4ft or 4 with 6ft mounting clips and screws
- Black lens option to minimize view of channel and lens
- For select LTR Series Tape - LTR-P, LTR-S and LTR-E
- Can be used in various applications such as:
  - Ceiling corners
  - Undercabinet
  - Dark cabinetry (black lens)
  - Vertical corner accent
  - Bookcase
  - Night club (black lens)
  - Hospitality

# LED-CHL-2

## Multi-Color Aluminum Mounting Channel



**LED-CHL2-4-CA**

**LED-CHL2-4-WH**

**LED-CHL2-4-BK**

**LED-CHL2-4-BK &  
LED-CHL2-LENS-BL**

**Fits EST connectors for easy assembly**

### ORDERING INFORMATION

Channel/Lens	Color	Length	Description
LED-CHL2-4-CA	Silver	4'	4' channel, 4' white lens (2) mounting clips, (2) screws
LED-CHL2-4-WH	White		
LED-CHL2-4-BK	Black		
LED-CHL2-6-CA	Silver	6'	6' channel, 6' white lens, (4) mounting clips, (4) screws
LED-CHL2-6-WH	White		
LED-CHL2-6-BK	Black		
LED-CHL2 LENS-4-BK	Black	4'	4 foot lens in black for <b>LED-CHL2-4</b>
LED-CHL2 LENS-6-BK	Black	6'	6 foot lens in black for <b>LED-CHL2-6</b>

### ACCESSORIES

Catalog No.	Color	Description
LED-CHL2-ECG	Silver	(2) End caps for <b>LED-CHL2-CA</b> : light gray, one solid, one with hole
LED-CHL2-ECW	White	(2) End caps for <b>LED-CHL2-WH</b> : white, one solid, one with hole
LED-CHL2-ECB	Black	(2) End caps for <b>LED-CHL2-BK</b> : black, one solid, one with hole
LED-CHL2-MC	Silver	(2) Mounting clips and (2) screws
LED-CHL2-AMC	White	(2) Adjustable mounting clips and (2) screws

